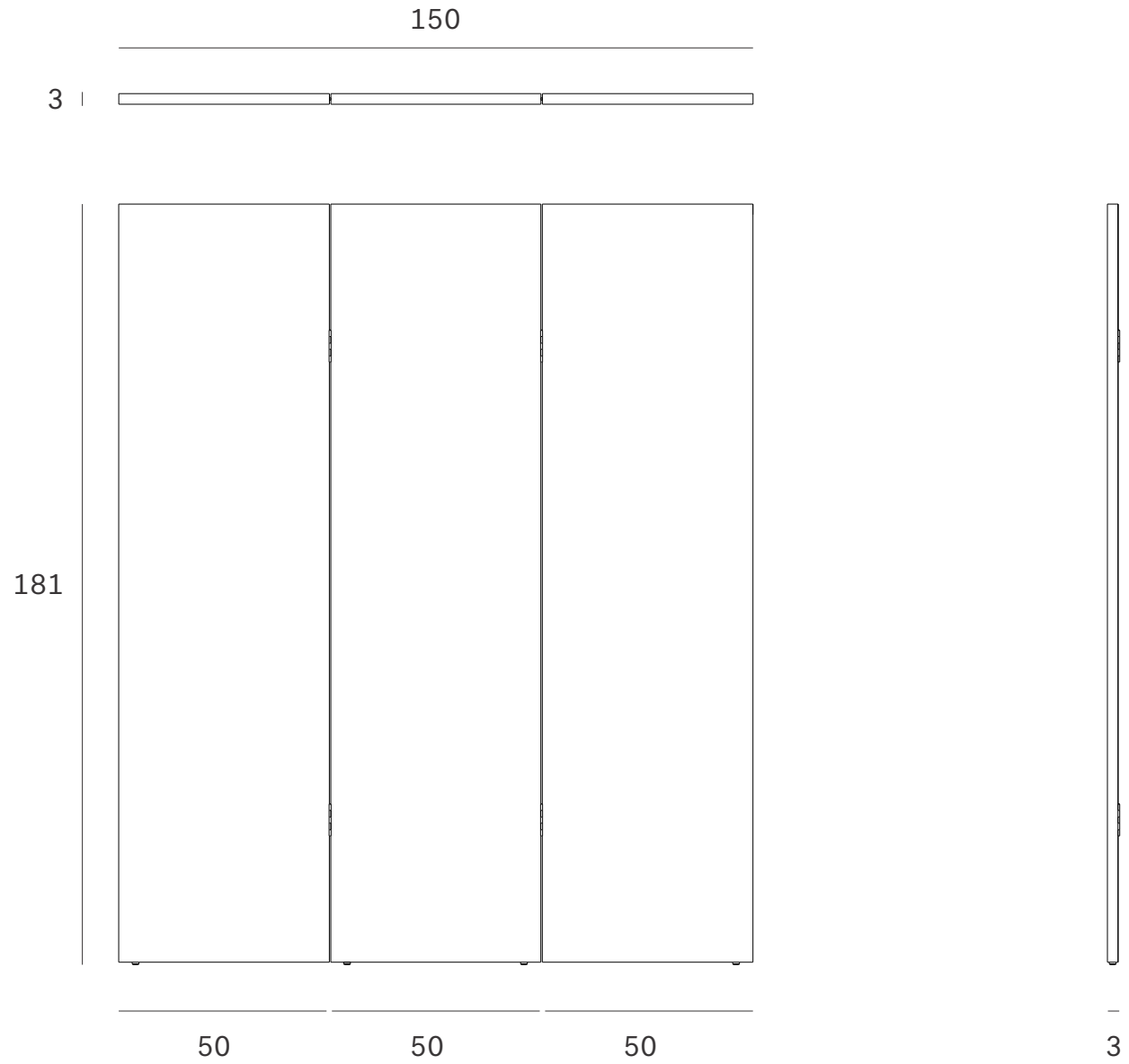


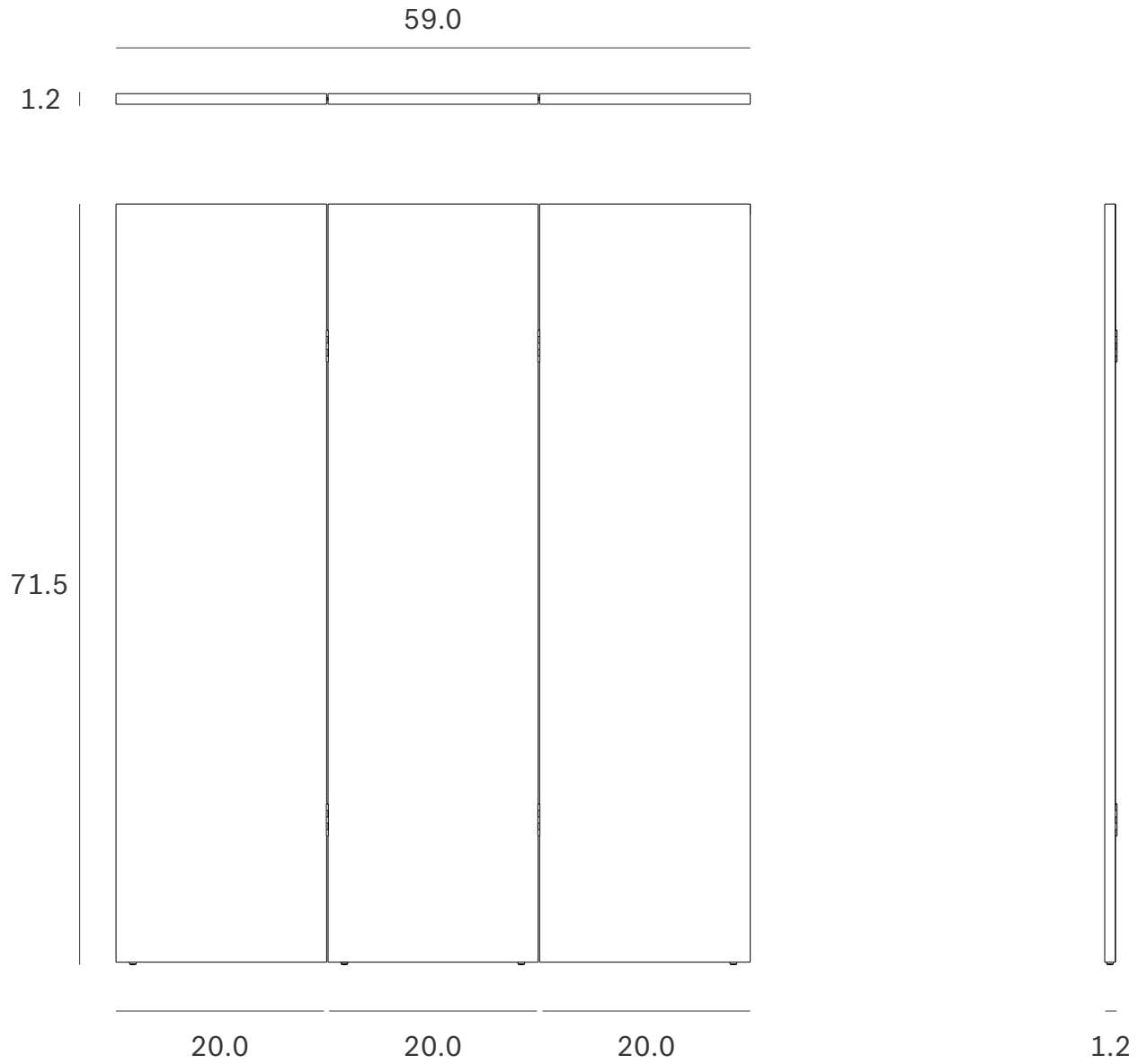
Ethnicraft

Chopped room divider - Dimensions (cm)



Ethnicraft

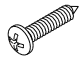

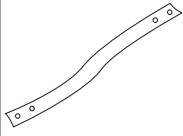
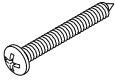
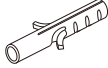
Chopped room divider - Dimensions (inches)



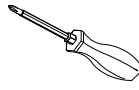
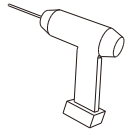
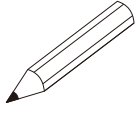
35135 CHOPPED ROOM DIVIDER - VARNISHED MAHOGANY ASSEMBLY INSTRUCTIONS FOR ANTI-TIPPING INSTALLATION

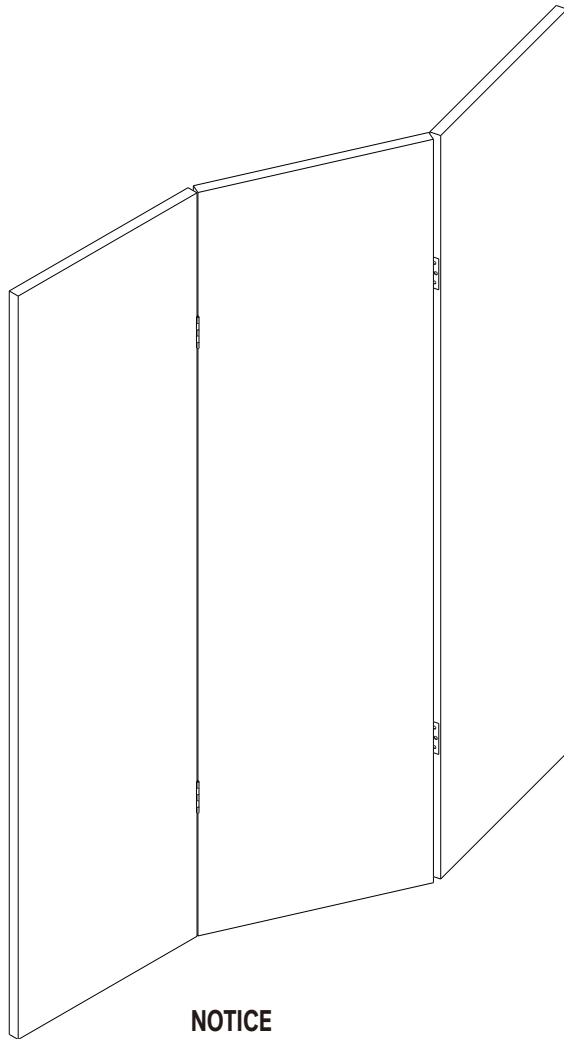


HARDWARE ENCLOSED

 PAB CREW M4x3/4" (2pcs)	 BUCKLE (2pcs)	 BELT (2pcs)
 PAB SCREW M4x40 (2pcs)	 WALL PLUG S8x40 (2pcs)	

TOOLS REQUIRED (Not include in package)

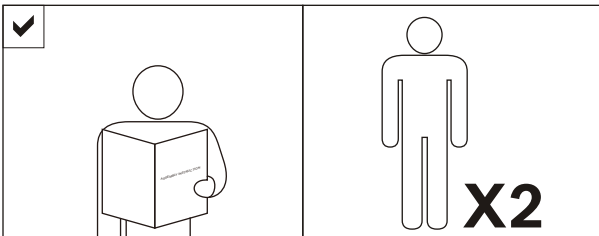
 PHILLIPS SCREWDRIVER	 DRILL	 PENCIL
---	---	--



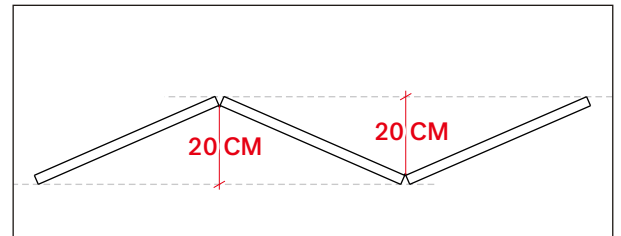
IN YOUR PACKAGE :

ASSEMBLY INSTRUCTIONS
HARDWARE (AS LISTED ABOVE)

NOTICE



NOTICE

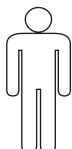


TO PREVENT INSTABILITY, ENSURE THE DEPTH IS NO LESS THAN 20CM (8") WHEN OPENED

SYMBOLS



DIRECTION



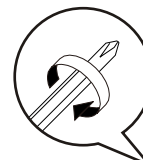
NUMBER OF PERSONS NEEDED



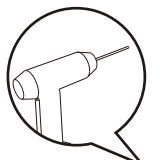
USE HAND



USE PENCIL



USE PHILLIPS SCREWDRIVER TO TIGHTEN



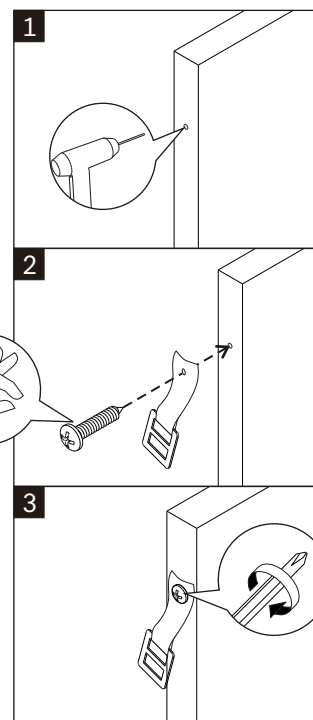
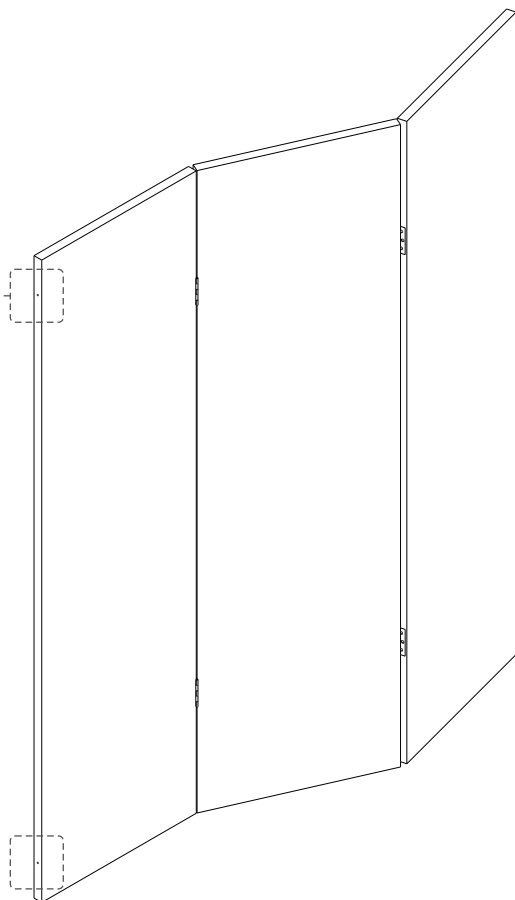
USE DRILL

35135 CHOPPED ROOM DIVIDER - VARNISHED MAHOGANY ASSEMBLY INSTRUCTIONS FOR ANTI-TIPPING INSTALLATION



A INSTALLING BUCKLES

RECOMMENDED FIXING POSITIONS

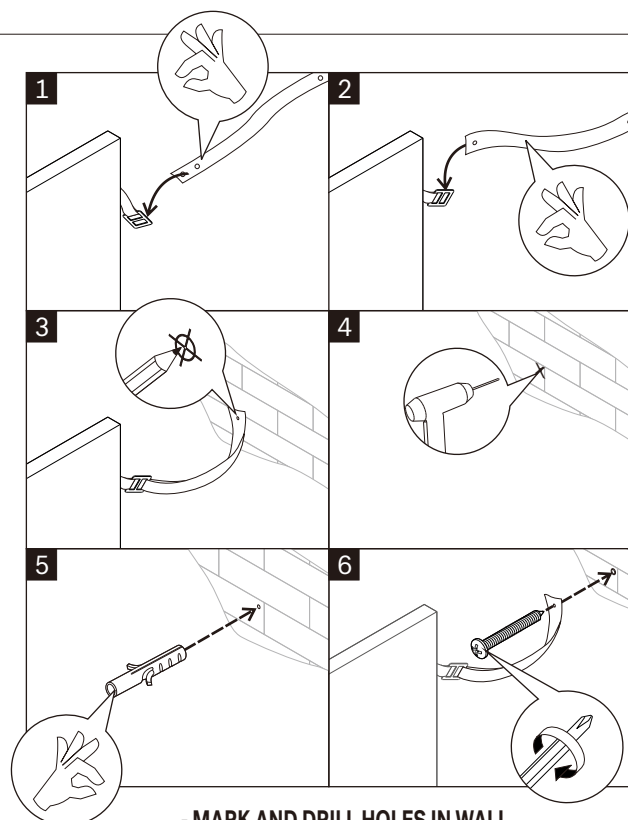
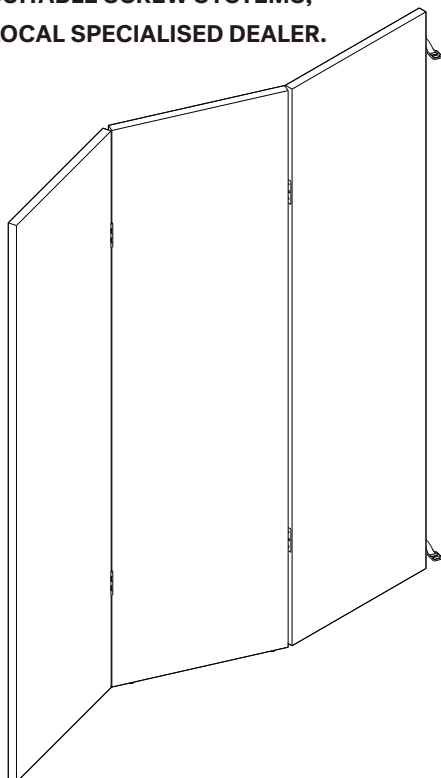


- USE BUCKLES (x2)
- USE PAB SCREWS M4x3/4" (x2)
- TIGHTEN FULLY

B INSTALLING BELTS



AS WALL MATERIALS VARY,
THE SCREW INCLUDED ARE FOR BRICK WALL.
FOR ADVICE ON SUITABLE SCREW SYSTEMS,
CONTACT YOUR LOCAL SPECIALISED DEALER.



- MARK AND DRILL HOLES IN WALL ON THE SAME HEIGHT AS THE BUCKLES
- USE BELTS (x2)
- USE WALL PLUGS S8 (x2)
- USE PAB SCREWS M4x40 (x2)
- TIGHTEN FULLY