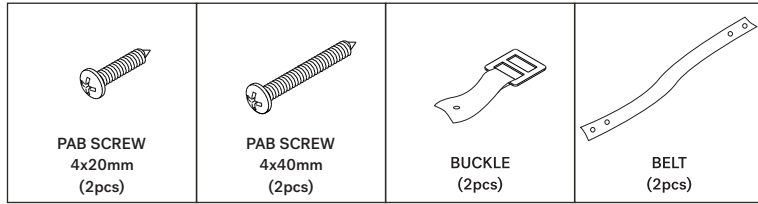


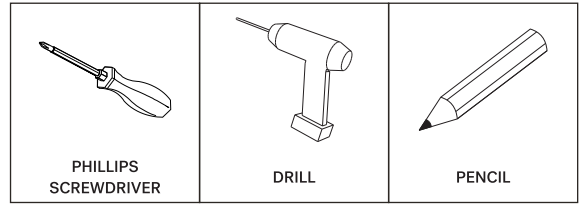
## 35135 CHOPPED ROOM DIVIDER - VARNISHED MAHOGANY ASSEMBLY INSTRUCTIONS FOR ANTI-TIPPING INSTALLATION



### HARDWARE ENCLOSED

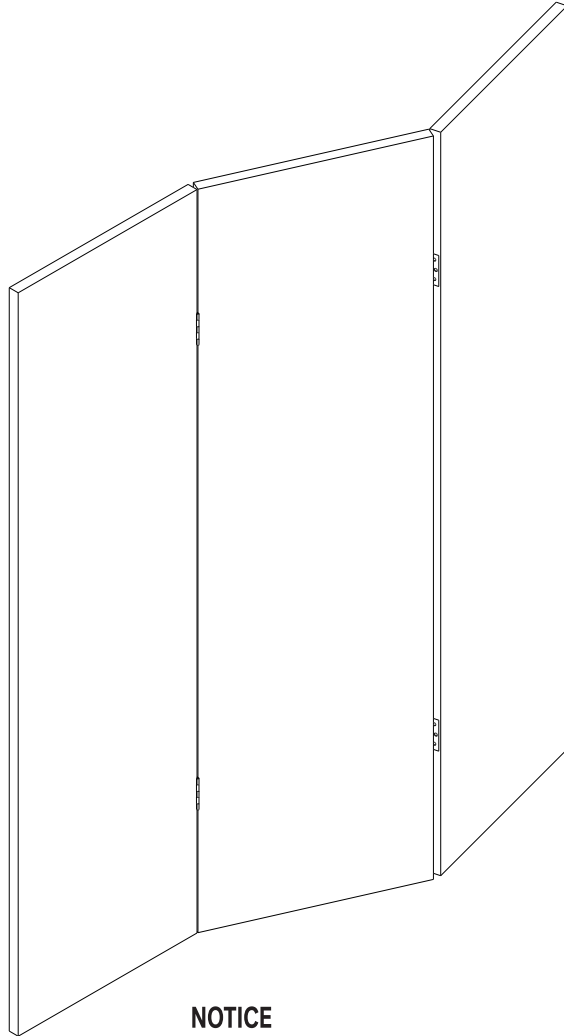
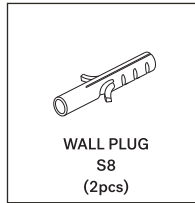


### TOOLS REQUIRED (Not included in package)



### HARDWARE REQUIRED

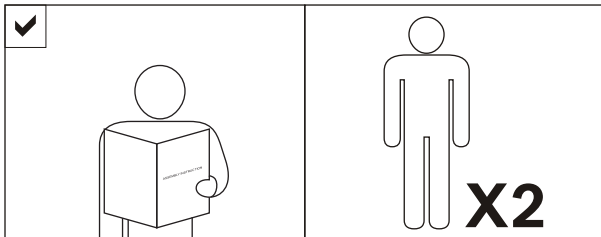
(Not included in package)



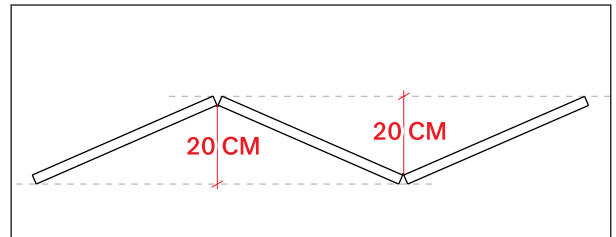
### IN YOUR PACKAGE :

ASSEMBLY INSTRUCTIONS  
HARDWARE (AS LISTED ABOVE)

### NOTICE



### NOTICE

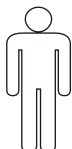


**TO PREVENT INSTABILITY, ENSURE THE DEPTH IS NO LESS THAN 20CM (8") WHEN OPENED**

### SYMBOLS



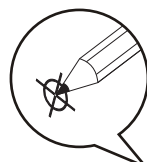
DIRECTION



NUMBER OF  
PERSONS NEEDED



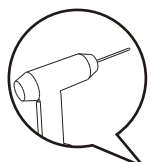
USE HAND



USE PENCIL



USE PHILLIPS SCREWDRIVER  
TO TIGHTEN



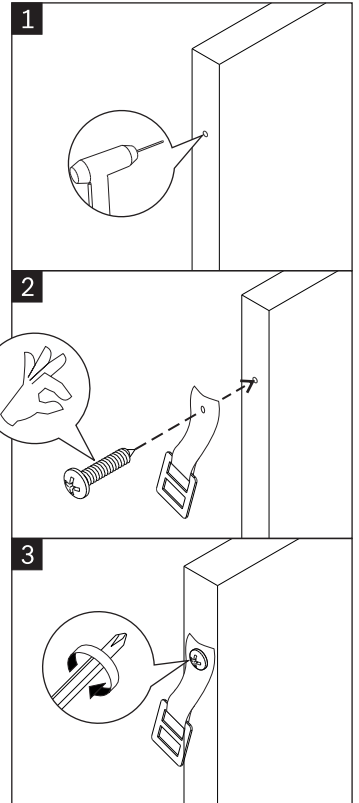
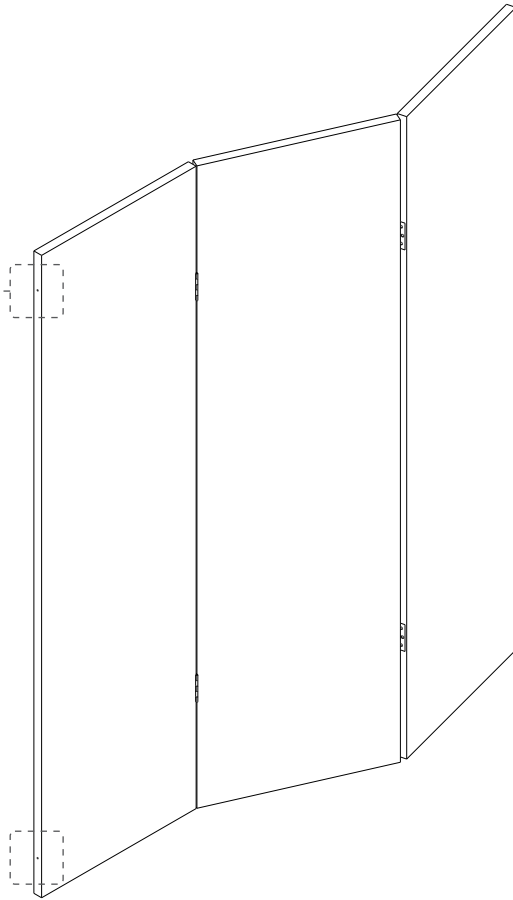
USE DRILL

## 35135 CHOPPED ROOM DIVIDER - VARNISHED MAHOGANY ASSEMBLY INSTRUCTIONS FOR ANTI-TIPPING INSTALLATION



### A INSTALLING BUCKLES

RECOMMENDED FIXING POSITIONS

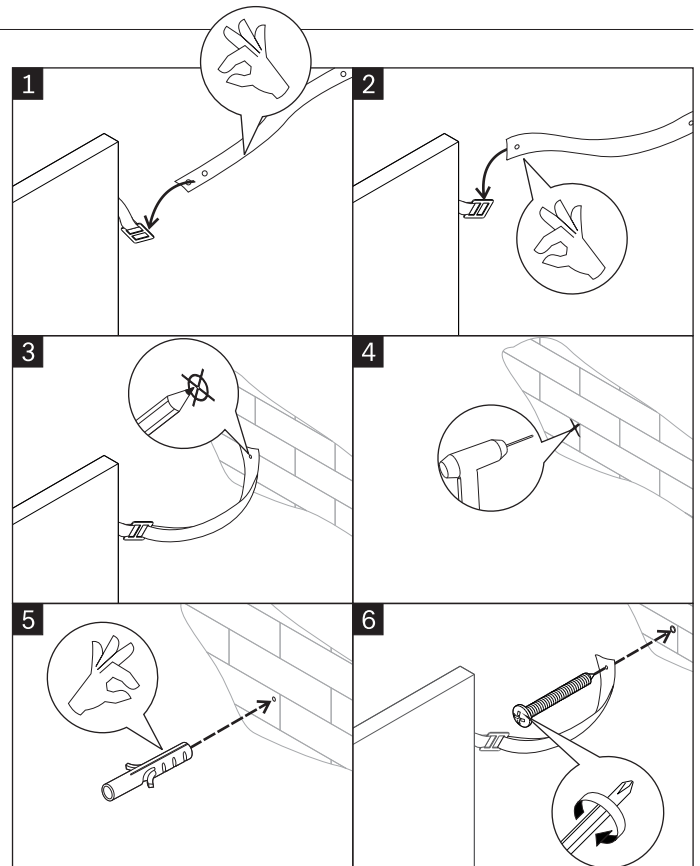
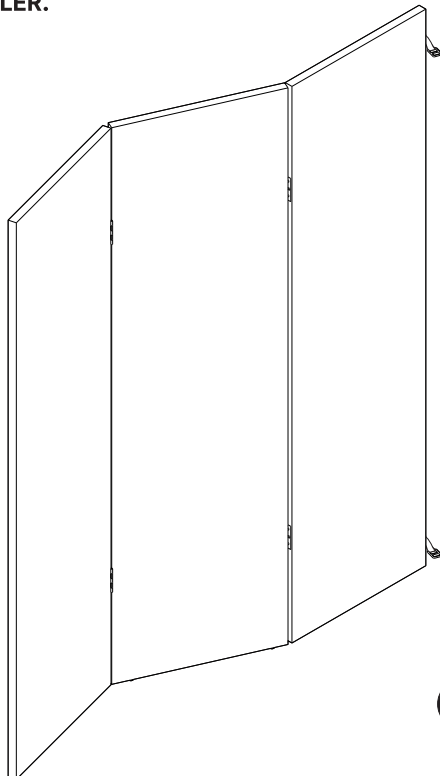


- USE BUCKLES (2X)
- USE PAB SCREWS 4x20mm (2X)
- TIGHTEN FULLY

### B INSTALLING BELTS



AS WALL MATERIALS VARY, WALL PLUG FOR FIXING TO WALL ARE NOT INCLUDED. FOR ADVICE ON SUITABLE SCREW SYSTEMS, CONTACT YOUR LOCAL SPECIALISED DEALER.



- MARK AND DRILL HOLES IN WALL ON THE SAME HEIGHT AS THE BUCKLES
- USE BELTS (2X)
- USE WALL PLUGS S8 (2X)
- USE PAB SCREWS 4x40mm (2X)
- TIGHTEN FULLY